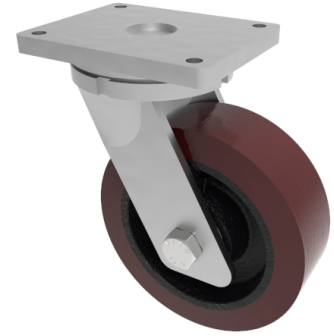


Polyurethane Cast Iron Plate Swivel Castor 300mm 3000kg Load

Product code: BZQXX300PTBJ

Fabricated swivel castor with a top plate fixing fitted with a polyurethane tyre wheel on a cast iron centre with ball bearings. Wheel diameter 300mm, tread width 100mm, overall height 395mm, top plate 255mm x 200mm, hole centres 210mm x 160mm. Load capacity 3000kg.



Diameter (mm)	300
Fixing Option	Plate
Castor Type	Swivel
Bearing Type	Ball
Height (mm)	395
Plate Size (mm)	255 X 200
Hole Centres (mm)	210 X 160
To Suit Fixing Bolt (mm)	16
Wheel Material	Polyurethane on Cast Iron
Colour / Shore Hardness	Brown Polyurethane on Cast Iron Rim / 94 Shore A
Temperature Resistance	-20 °C TO +80 °C
Top Plate Thickness (mm)	21
Fork Thickness (mm)	12
Swivel Radius (mm)	243
Load Capacity (kg)	3000
Tread (mm)	100

BIL GROUP LTD

Porte Marsh Road, Calne, Wiltshire, SN11 9BW

Registered in England No: 2603821

VAT Reg: GB572705729

