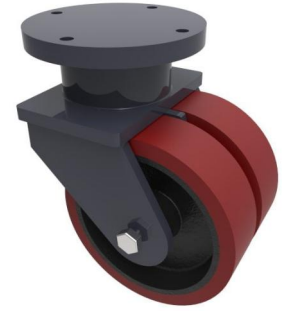


## Polyurethane Cast Iron Plate Swivel Castor 400mm 9200kg Load

**Product code: 2BZSZ400PTBJ**



Heavy duty fabricated twin wheel swivel castor fitted with 2 x 95 shore A polyurathane tyred cast iron centred wheel with ball bearings, Wheel diameter 400mm, Tread width 125mm x 2, Overall height 570mm, Top plate 365mm diameter, Hole centres 4 holes at 300mm pcd, Load capacity 9200kg  
 \*\*MANUFACTURED TO ORDER\*\*

Diameter (mm)	400
Fixing Option	Plate
Castor Type	Swivel
Bearing Type	Ball
Plate Size (mm)	365
Hole Centres (mm)	365
Height (mm)	570
Swivel Radius (mm)	369
To Suit Fixing Bolt (mm)	24
Wheel Material	Polyurethane on Cast Iron
Colour / Shore Hardness	Brown Polyurethane on Cast Iron Rim / 94 Shore A
Temperature Resistance	&quot;-20 °C TO +80 °C
Tread (mm)	2 x 125
Load Capacity (kg)	9200