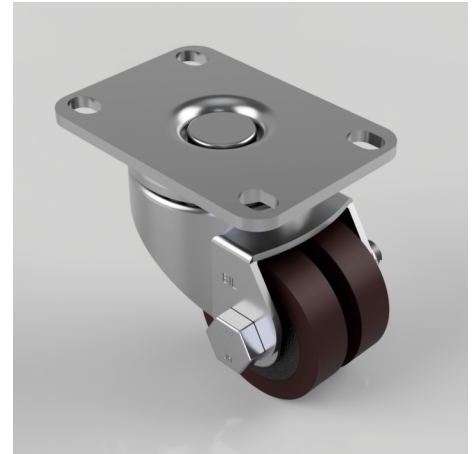


Polyurethane Cast Iron Plate Swivel Castor 50mm 160kg Load

Product code: 2BZLR50PT

Twin Pressed steel swivel castor with a top plate fixing fitted with 2 x brown polyurethane tyred cast iron wheels with plain bore. Wheel diameter 2 x 50mm, tread width 2 x 14mm, overall height 77mm, plate size 92mm x 64mm, hole centres 78/71mm x 45mm. Load capacity 160kg.



Height (mm)	77
Fixing Option	Plate
Castor Type	Swivel
Load Capacity (kg)	160
Diameter (mm)	50
Bearing Type	Plain
Tread (mm)	14 x 2
To Suit Fixing Bolt (mm)	8
Swivel Radius (mm)	56
Wheel Material	Polyurethane on Cast Iron
Colour / Shore Hardness	Brown Polyurethane on Cast Iron Rim / 94 Shore A
Fork Thickness (mm)	2.5
Plate Size (mm)	92 x 64
Hole Centres (mm)	71/78 x 45
Top Plate Thickness (mm)	4
Temperature Resistance	-20 °C TO +80 °C