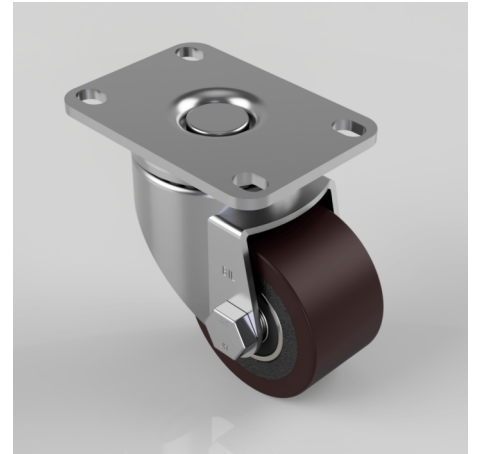


Polyurethane Cast Iron Plate Swivel Castor 60mm 180kg Load

Product code: BZLR60PTBJ

Pressed steel swivel castor with a top plate fixing fitted with a brown polyurethane tyred cast iron centred wheel with ball bearing. Wheel diameter 60mm, tread width 35mm, overall height 89mm, plate size 92mm x 64mm, hole centres 78/71mm x 45mm. Load capacity 180kg.



Fixing Option	Plate
Castor Type	Swivel
Load Capacity (kg)	180
Wheel Material	Polyurethane on Cast Iron
Diameter (mm)	60
Bearing Type	Ball
Tread (mm)	35
Height (mm)	89
Swivel Radius (mm)	62
Colour / Shore Hardness	Brown Polyurethane on Cast Iron Rim / 94 Shore A
Plate Size (mm)	92 x 64
Hole Centres (mm)	71/78 x 45
Top Plate Thickness (mm)	4
Fork Thickness (mm)	2.5
Fixing Bolt (mm)	8
Temperature Resistance	-20 °C TO +80 °C