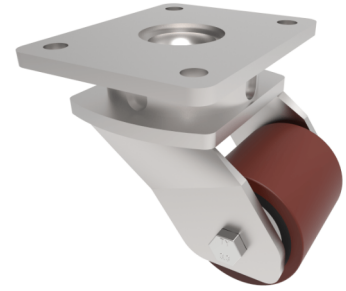


Polyurethane Cast Iron Plate Swivel Castor 70mm 500kg Load

Product code: BZKL75PTBJ



Fabricated swivel castor with a top plate fixing fitted with a polyurethane tyred steel core roller with ball bearings. Wheel diameter 75mm, tread width 75mm, overall height 130mm, top plate 127.5mm x 110mm, hole centres 105mm x 80mm. Load capacity 500kg.

Diameter (mm)	75
Fixing Option	Plate
Castor Type	Swivel
Bearing Type	Ball
Height (mm)	128
Plate Size (mm)	138 x 110
Hole Centres (mm)	105 x 80
To Suit Fixing Bolt (mm)	10
Wheel Material	Polyurethane on Cast Iron
Colour / Shore Hardness	Brown Polyurethane on Cast Iron Rim / 94 Shore A
Temperature Resistance	-20 °C TO +80 °C
Top Plate Thickness (mm)	7.5
Fork Thickness (mm)	6
Swivel Radius (mm)	79
Load Capacity (kg)	500
Tread (mm)	75

BIL GROUP LTD

Porte Marsh Road, Calne, Wiltshire, SN11 9BW

Registered in England No: 2603821

VAT Reg: GB572705729

