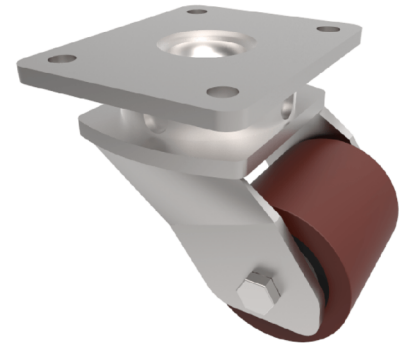


## Polyurethane Cast Iron Plate Swivel Castor 70mm 500kg Load

**Product code: BZLL70PTBJ**



Fabricated swivel castor with a top plate fixing fitted with a polyurethane tyred steel core roller with ball bearings. Wheel diameter 70mm, tread width 70mm, overall height 127mm, top plate 150mm x 110mm, hole centres 105mm x 80mm or 121mm x 59mm. Load capacity 500kg.

Diameter (mm)	70
Fixing Option	Plate
Castor Type	Swivel
Bearing Type	Ball
Height (mm)	127
Plate Size (mm)	150 x 110
Hole Centres (mm)	105/121 x 80/59
To Suit Fixing Bolt (mm)	12
Wheel Material	Polyurethane on Cast Iron
Colour / Shore Hardness	Brown Polyurethane on Cast Iron Rim / 94 Shore A
Temperature Resistance	-20 °C TO +80 °C
Top Plate Thickness (mm)	7.5
Fork Thickness (mm)	6
Swivel Radius (mm)	91
Load Capacity (kg)	500
Tread (mm)	70