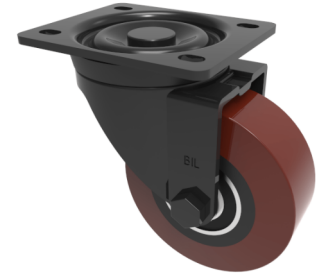


## Polyurethane Cast Iron Plate Swivel Castor 80mm 250kg Load

**Product code: BLKH80PTBJ**



Pressed steel black painted swivel castor with a top plate fixing fitted with a polyurethane tyre wheel on cast iron centre with ball bearings. Wheel diameter 80mm, tread width 36mm, overall height 110mm, top plate 105mm x 86mm, hole centres 80mm x 60mm. Load capacity 250kg.

Diameter (mm)	80
Castor Type	Swivel
Fixing Option	Plate
Height (mm)	110
Wheel Material	Polyurethane on Cast Iron
Colour / Shore Hardness	Brown Polyurethane on Cast Iron Rim / 94 Shore A
Temperature Resistance	-20 °C TO +80 °C
Bearing Type	Ball
Load Capacity (kg)	250
Tread (mm)	36
Swivel Radius (mm)	78
Plate Size (mm)	105 x 86
Hole Centres (mm)	80 X 60
Top Plate Thickness (mm)	3
Fork Thickness (mm)	3
To Suit Fixing Bolt (mm)	8

### BIL GROUP LTD

Porte Marsh Road, Calne, Wiltshire, SN11 9BW

Registered in England No: 2603821

VAT Reg: GB572705729

