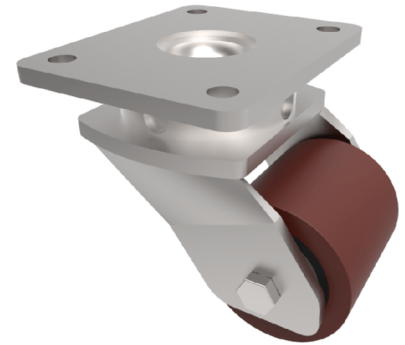


Polyurethane Cast Iron Plate Swivel Castor 85mm 700kg Load

Product code: BZL85PTBJ

Fabricated swivel castor with a top plate fixing fitted with a polyurethane tyred steel core roller with ball bearings. Wheel diameter 85mm, tread width 70mm, overall height 133mm, top plate 138mm x 110mm, hole centres 105mm x 80mm. Load capacity 700kg.



Diameter (mm)	85
Fixing Option	Plate
Castor Type	Swivel
Bearing Type	Ball
Height (mm)	133
Plate Size (mm)	138 x 110
Hole Centres (mm)	105 x 80/75
To Suit Fixing Bolt (mm)	10
Wheel Material	Polyurethane on Cast Iron
Colour / Shore Hardness	Brown Polyurethane on Cast Iron Rim / 94 Shore A
Temperature Resistance	-20 °C TO +80 °C
Top Plate Thickness (mm)	7.5
Fork Thickness (mm)	6
Swivel Radius (mm)	85
Load Capacity (kg)	700
Tread (mm)	70

BIL GROUP LTD

Porte Marsh Road, Calne, Wiltshire, SN11 9BW

Registered in England No: 2603821

VAT Reg: GB572705729

