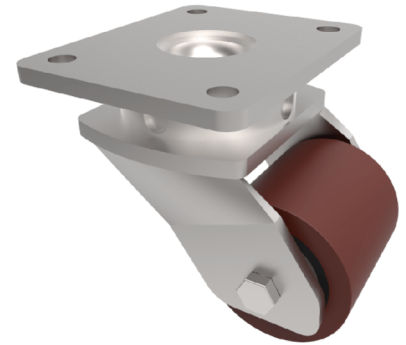


## Polyurethane Cast Iron Plate Swivel Castor 85mm 700kg Load

**Product code: BZLL8575PTBJ**



Fabricated swivel castor with a top plate fixing fitted with a polyurethane on cast iron centred wheel with ball journal bearings. Wheel diameter 85mm, tread width 70mm, overall height 135mm, top plate 150mm x 150mm, hole centres 105mm x 80mm. Load capacity 700kg.

Diameter (mm)	75
Fixing Option	Plate
Castor Type	Swivel
Bearing Type	Ball
Height (mm)	135
Plate Size (mm)	150 x 110
Hole Centres (mm)	105/121 x 80/59
To Suit Fixing Bolt (mm)	12
Wheel Material	Polyurethane on Cast Iron
Colour / Shore Hardness	Brown Polyurethane on Cast Iron Rim / 94 Shore A
Temperature Resistance	-20 °C TO +80 °C
Top Plate Thickness (mm)	7.5
Fork Thickness (mm)	6
Swivel Radius (mm)	98
Load Capacity (kg)	700
Tread (mm)	70

### BIL GROUP LTD

Porte Marsh Road, Calne, Wiltshire, SN11 9BW

Registered in England No: 2603821

VAT Reg: GB572705729

