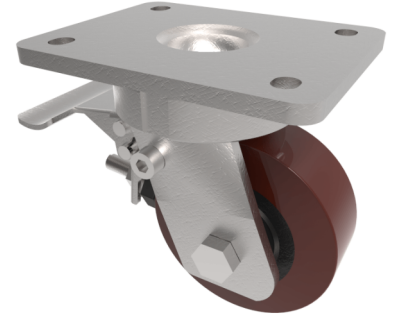


Polyurethane Cast Iron Plate Swivel Castor Brake 100mm 300kg Load

Product code: BZKL100PTBJSWB



Fabricated swivel castor with a stem fitting fitted with a brown polyurethane wheel with a cast iron centre with ball bearings and swivel wheel brake. Wheel diameter 100mm, tread width 40mm, overall height 140mm, top plate 138mm x 110mm, hole centres 105mm x 80/75mm. Load capacity 300kg.

| | |
|--------------------------|--|
| Diameter (mm) | 100 |
| Fixing Option | Plate |
| Castor Type | Swivel with Total Lock Brake |
| Bearing Type | Ball |
| Height (mm) | 140 |
| Plate Size (mm) | 138 x 110 |
| Hole Centres (mm) | 105 x 80 |
| To Suit Fixing Bolt (mm) | 10 |
| Wheel Material | Polyurethane on Cast Iron |
| Colour / Shore Hardness | Brown Polyurethane on Cast Iron Rim / 94 Shore A |
| Temperature Resistance | -20 °C TO +80 °C |
| Top Plate Thickness (mm) | 7.5 |
| Fork Thickness (mm) | 6 |
| Swivel Radius (mm) | 100 |
| Load Capacity (kg) | 300 |
| Tread (mm) | 40 |

BIL GROUP LTD

Porte Marsh Road, Calne, Wiltshire, SN11 9BW

Registered in England No: 2603821

VAT Reg: GB572705729

