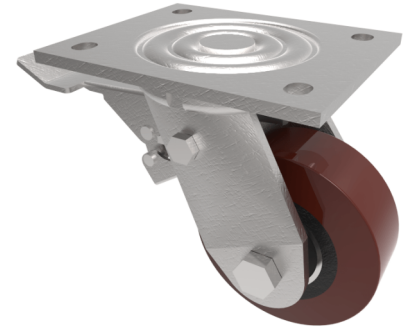


## Polyurethane Cast Iron Plate Swivel Castor Brake 100mm 300kg Load

**Product code: BZJ100PTBJSWB**

Fabricated swivel castor with top plate fixing fitted with brown polyurethane tyre on cast iron centred wheel with ball bearing with a total lock brake. Wheel diameter 100mm, tread width 40mm, overall height 143mm plate size 135mm x 110mm, hole centers 105mm x 80mm. Load capacity 300kg.



Diameter (mm)	100
Fixing Option	Plate
Castor Type	Swivel with Total Lock Brake
Bearing Type	Ball
Height (mm)	143
Plate Size (mm)	135 x 110
Hole Centres (mm)	105 x 80
To Suit Fixing Bolt (mm)	10
Wheel Material	Polyurethane on Cast Iron
Colour / Shore Hardness	Brown Polyurethane on Cast Iron Rim / 94 Shore A
Temperature Resistance	-20 °C TO +80 °C
Top Plate Thickness (mm)	5.5
Fork Thickness (mm)	5.5
Swivel Radius (mm)	112
Load Capacity (kg)	300
Tread (mm)	40

### BIL GROUP LTD

Porte Marsh Road, Calne, Wiltshire, SN11 9BW

Registered in England No: 2603821

VAT Reg: GB572705729

