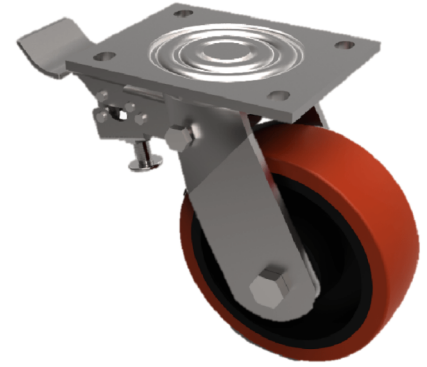


Polyurethane Cast Iron Plate Swivel Castor Brake 100mm 400kg Load

Product code: BZJ100PTBJSWB/50

Fabricated swivel castor with top plate fixing fitted with brown polyurethane tyre on cast iron centred wheel with ball bearing with a total lock brake. Wheel diameter 100mm, tread width 50mm, overall height 143mm plate size 135mm x 110mm, hole centers 105mm x 80mm. Load capacity 400kg.



Diameter (mm)	100
Fixing Option	Plate
Castor Type	Swivel with Total Lock Brake
Bearing Type	Ball
Height (mm)	143
Plate Size (mm)	135 x 110
Hole Centres (mm)	105 x 80
To Suit Fixing Bolt (mm)	10
Wheel Material	Polyurethane on Cast Iron
Colour / Shore Hardness	Brown Polyurethane on Cast Iron Rim / 94 Shore A
Temperature Resistance	-20 °C TO +80 °C
Top Plate Thickness (mm)	5.5
Fork Thickness (mm)	5.5
Swivel Radius (mm)	112
Load Capacity (kg)	400
Tread (mm)	50

BIL GROUP LTD

Porte Marsh Road, Calne, Wiltshire, SN11 9BW

Registered in England No: 2603821

VAT Reg: GB572705729

