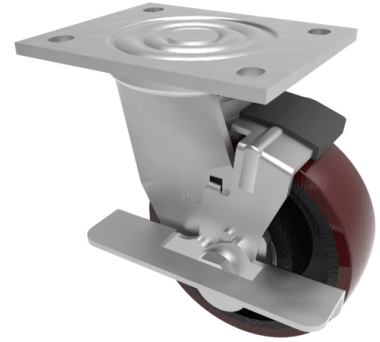


Polyurethane Cast Iron Plate Swivel Castor Brake 125mm 400kg Load

Product code: BZJ125PTBJBK

Fabricated swivel castor with a top plate fixing fitted with a polyurethane tyred cast iron centred wheel with ball bearings and side fitting wheel brake. Wheel diameter 125mm, tread width 40mm, overall height 165mm, top plate 135mm x 110mm, hole centres 105mm x 80mm. Load capacity 400kg.



| | |
|--------------------------|--|
| Diameter (mm) | 125 |
| Fixing Option | Plate |
| Castor Type | Swivel with Wheel Brake |
| Bearing Type | Ball |
| Height (mm) | 165 |
| Plate Size (mm) | 135 x 110 |
| Hole Centres (mm) | 105 x 80 |
| To Suit Fixing Bolt (mm) | 10 |
| Wheel Material | Polyurethane on Cast Iron |
| Colour / Shore Hardness | Brown Polyurethane on Cast Iron Rim / 94 Shore A |
| Temperature Resistance | -20 °C TO +80 °C |
| Top Plate Thickness (mm) | 5.5 |
| Fork Thickness (mm) | 5.5 |
| Swivel Radius (mm) | 126 |
| Load Capacity (kg) | 400 |
| Tread (mm) | 40 |

BIL GROUP LTD

Porte Marsh Road, Calne, Wiltshire, SN11 9BW

Registered in England No: 2603821

VAT Reg: GB572705729

