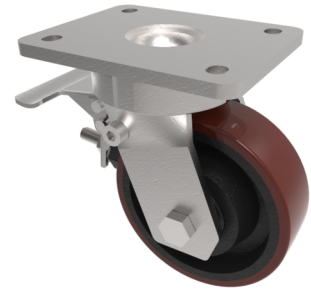


## Polyurethane Cast Iron Plate Swivel Castor Brake 125mm 400kg Load

**Product code: BZKL125PTBJSWB**

Fabricated swivel castor with a top plate fixing fitted with a polyurethane on cast iron centred wheel with ball journal bearings and total lock brake. Wheel diameter 125mm, tread width 40mm, overall height 165mm, top plate 138mm x 110mm, hole centres 105mm x 80/75mm. Load capacity 400kg.



|                          |  |
|--------------------------|--|
| Diameter (mm)            | 125  |
| Fixing Option            | Plate  |
| Castor Type              | Swivel with Total Lock Brake                     |
| Bearing Type             | Ball   |
| Height (mm)              | 165  |
| Plate Size (mm)          | 138 x 110  |
| Hole Centres (mm)        | 105 x 80   |
| To Suit Fixing Bolt (mm) | 10   |
| Wheel Material           | Polyurethane on Cast Iron                        |
| Colour / Shore Hardness  | Brown Polyurethane on Cast Iron Rim / 94 Shore A |
| Temperature Resistance   | -20 °C TO +80 °C                                 |
| Top Plate Thickness (mm) | 7.5  |
| Fork Thickness (mm)      | 6  |
| Swivel Radius (mm)       | 100  |
| Load Capacity (kg)       | 400  |
| Tread (mm)               | 40   |

### BIL GROUP LTD

Porte Marsh Road, Calne, Wiltshire, SN11 9BW

Registered in England No: 2603821

VAT Reg: GB572705729

