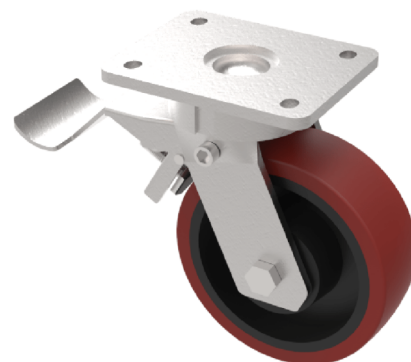


Polyurethane Cast Iron Plate Swivel Castor Brake 125mm 500kg Load

Product code: BZKL125PTBJSWB50

Fabricated swivel castor with a top plate fixing fitted with a brown polyurethane tyred on cast iron centred wheel with ball bearings and a total lock brake. Wheel diameter 125mm, tread width 50mm, overall height 165mm, plate size 138mm x 110mm, hole centres 105mm x 80/75mm. Load capacity 500kg



Diameter (mm)	125
Fixing Option	Plate
Castor Type	Swivel with Total Lock Brake
Bearing Type	Ball
Height (mm)	165
Plate Size (mm)	138 x 110
Hole Centres (mm)	105 x 80
To Suit Fixing Bolt (mm)	10
Wheel Material	Polyurethane on Cast Iron
Colour / Shore Hardness	Brown Polyurethane on Cast Iron Rim / 94 Shore A
Temperature Resistance	-20 °C TO +80 °C
Top Plate Thickness (mm)	7.5
Fork Thickness (mm)	6
Swivel Radius (mm)	100
Load Capacity (kg)	500
Tread (mm)	50

BIL GROUP LTD

Porte Marsh Road, Calne, Wiltshire, SN11 9BW

Registered in England No: 2603821

VAT Reg: GB572705729

