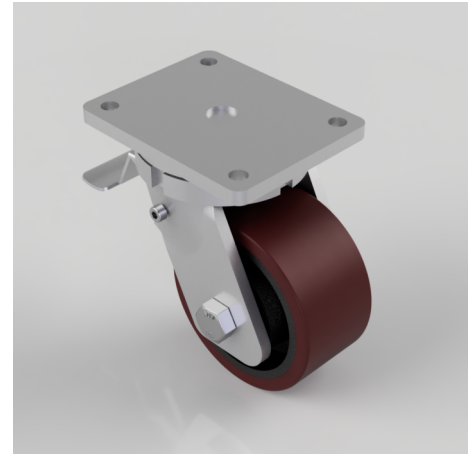


Polyurethane Cast Iron Plate Swivel Castor Brake 150mm 1150kg Load

Product code: BZQ150PTBJSWB/75

Fabricated swivel castors with a top plate fixing fitted with a polyurethane tyred cast iron centred wheel with ball bearings with a total lock brake. Wheel diameter 150mm, tread width 75mm, overall height 212mm, top plate 175mm x 140mm, hole centres 140mm x 105mm. Load capacity 1150kg.



Diameter (mm)	150
Fixing Option	Plate
Castor Type	Swivel with Total Lock Brake
Bearing Type	Ball
Height (mm)	212
Plate Size (mm)	170 X 140
Hole Centres (mm)	140 X 105
To Suit Fixing Bolt (mm)	14
Wheel Material	Polyurethane on Cast Iron
Colour / Shore Hardness	Brown Polyurethane on Cast Iron Rim / 94 Shore A
Temperature Resistance	-20 °C TO +80 °C
Top Plate Thickness (mm)	12
Fork Thickness (mm)	10
Swivel Radius (mm)	140
Load Capacity (kg)	1150
Tread (mm)	75

BIL GROUP LTD

Porte Marsh Road, Calne, Wiltshire, SN11 9BW

Registered in England No: 2603821

VAT Reg: GB572705729

