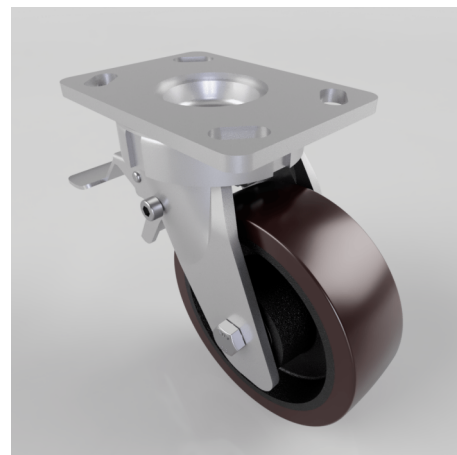


Polyurethane Cast Iron Plate Swivel Castor Brake 150mm 750kg Load

Product code: BZK150PTBJSWB

Fabricated swivel castor with a top plate fitted with a brown polyurethane tyre on a cast iron centred wheel with ball bearings and total lock brake. Wheel diameter 150mm, tread width 50mm, overall height 200mm, top plate 150mm x 110mm, hole centres 105mm x 80mm or 121mm x 59mm. Load cap 750kg.



| | |
|--------------------------|--|
| Diameter (mm) | 150 |
| Fixing Option | Plate |
| Castor Type | Swivel with Total Lock Brake |
| Bearing Type | Ball |
| Height (mm) | 200 |
| Plate Size (mm) | 150 x 110 |
| Hole Centres (mm) | 105/121 x 80/59 |
| To Suit Fixing Bolt (mm) | 12 |
| Wheel Material | Polyurethane on Cast Iron |
| Colour / Shore Hardness | Brown Polyurethane on Cast Iron Rim / 94 Shore A |
| Temperature Resistance | -20 °C TO +80 °C |
| Top Plate Thickness (mm) | 7.5 |
| Fork Thickness (mm) | 6 |
| Swivel Radius (mm) | 140 |
| Load Capacity (kg) | 750 |
| Tread (mm) | 50 |

BIL GROUP LTD

Porte Marsh Road, Calne, Wiltshire, SN11 9BW

Registered in England No: 2603821

VAT Reg: GB572705729

