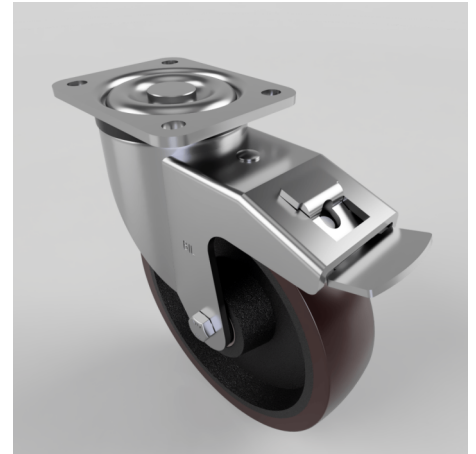


## Polyurethane Cast Iron Plate Swivel Castor Brake 200mm 1000kg Load

**Product code: BZXP200PTBJSWB**

Pressed steel swivel castor with a top plate fixing fitted with a brown polyurethane tyre cast iron centred wheel with ball bearings and a total lock brake. Wheel diameter 200mm, tread width 50mm, overall height 245mm, top plate 135mm x 110mm, hole centres 105mm x 80mm/75mm. Load capacity 1000kg.



Diameter (mm)	200
Castor Type	Swivel with Total Lock Brake
Fixing Option	Plate
Height (mm)	245
Wheel Material	Polyurethane on Cast Iron
Colour / Shore Hardness	Brown Polyurethane on Cast Iron Rim / 94 Shore A
Temperature Resistance	-20 °C TO +80 °C
Bearing Type	Ball
Load Capacity (kg)	1000
Tread (mm)	50
Swivel Radius (mm)	180
Plate Size (mm)	135 x 110
Hole Centres (mm)	105 x 75/80
Top Plate Thickness (mm)	6
Fork Thickness (mm)	5
To Suit Fixing Bolt (mm)	10

### BIL GROUP LTD

Porte Marsh Road, Calne, Wiltshire, SN11 9BW

Registered in England No: 2603821

VAT Reg: GB572705729

