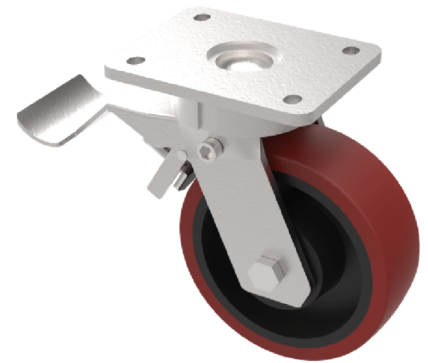


Polyurethane Cast Iron Plate Swivel Castor Brake 200mm 900kg Load

Product code: BZKL200PTBJSWB/WT

Fabricated swivel castor with a flat plate fixing fitted with a brown polyurethane tyred on cast iron centre wheel with ball bearing with a total lock brake. Wheel diameter 200mm, tread width 60mm, overall height 245mm, plate size 138mm x 110mm, hole centres 105mm x 80mm/75mm. Load capacity 900kg. NB the BIL catalogue is incorrect overall height is 245mm.



Diameter (mm)	200
Fixing Option	Plate
Castor Type	Swivel with Total Lock Brake
Bearing Type	Ball
Height (mm)	245
Plate Size (mm)	138 x 110
Hole Centres (mm)	105 x 80
To Suit Fixing Bolt (mm)	10
Wheel Material	Polyurethane on Cast Iron
Colour / Shore Hardness	Brown Polyurethane on Cast Iron Rim / 94 Shore A
Temperature Resistance	-20 °C TO +80 °C
Top Plate Thickness (mm)	7.5
Fork Thickness (mm)	6
Swivel Radius (mm)	155
Load Capacity (kg)	900
Tread (mm)	60

BIL GROUP LTD

Porte Marsh Road, Calne, Wiltshire, SN11 9BW

Registered in England No: 2603821

VAT Reg: GB572705729

