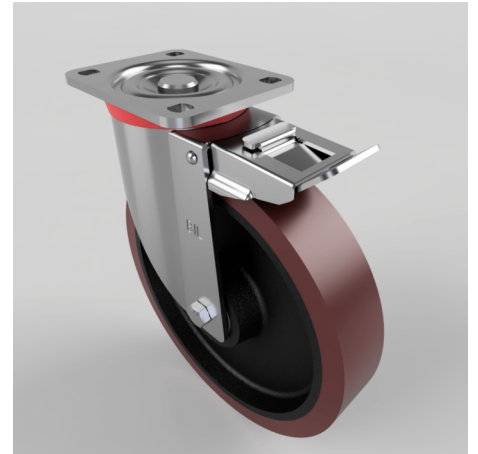


Polyurethane Cast Iron Plate Swivel Castor Brake 250mm 800kg Load

Product code: BZP250PTBJSWB

Pressed steel swivel castor with a flat plate fixing fitted with a brown polyurethane on cast iron wheel with a ball bearing and total lock brake . Wheel diameter 250mm, tread width 50mm, overall height 300mm, plate size 135mm x 110mm, hole centres 105mm x 80mm . Load capacity 800kg.



Diameter (mm)	250
Castor Type	Swivel with Total Lock Brake
Fixing Option	Plate
Height (mm)	292
Wheel Material	Polyurethane on Cast Iron
Colour / Shore Hardness	Brown Polyurethane on Cast Iron Rim / 94 Shore A
Temperature Resistance	-20 °C TO +80 °C
Bearing Type	Ball
Load Capacity (kg)	800
Tread (mm)	50
Swivel Radius (mm)	180
Plate Size (mm)	135 x 110
Hole Centres (mm)	105 x 80
Top Plate Thickness (mm)	6
Fork Thickness (mm)	4
To Suit Fixing Bolt (mm)	12