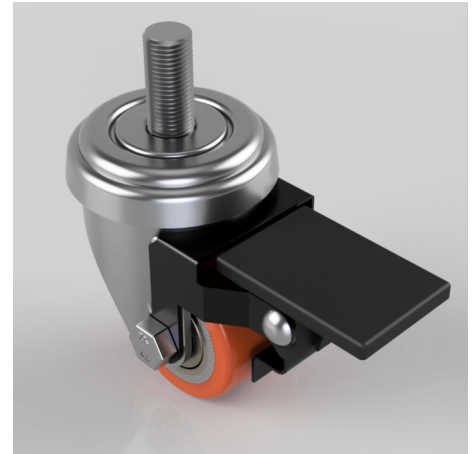


Polyurethane Cast Iron Stem Swivel Braked Castor 35mm 100kg Load

Product code: BZXH35PTBJST10BR

Pressed steel swivel castor with 10mm threaded stem, fitted with a brown polyurethane tyred cast iron centred wheel with a ball bearing. Wheel diameter 35mm, tread width 27mm, overall height 58mm. Load capacity 100kg.



Fixing Option	Stem
Castor Type	Swivel with Wheel Brake
Load Capacity (kg)	100
Wheel Material	Polyurethane on Cast Iron
Diameter (mm)	35
Bearing Type	Ball
Tread (mm)	27
Height (mm)	58
Swivel Radius (mm)	65
Colour / Shore Hardness	Orange Polyuerthane on Steel Rim / 94 Shore A
Fork Thickness (mm)	2
Head Dia (mm)	46
Temperature Resistance	-10 °C TO +80 °C
To Suit Fixing Bolt (mm)	M10 x 25

BIL GROUP LTD

Porte Marsh Road, Calne, Wiltshire, SN11 9BW

Registered in England No: 2603821

VAT Reg: GB572705729

