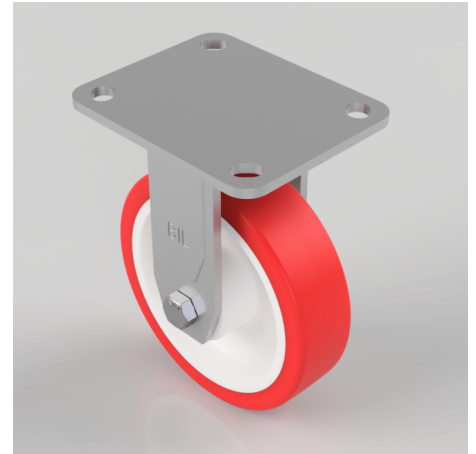


Polyurethane Fixed Castor 150mm 350kg Load

Product code: BZEJF150LNPB

Fabricated fixed castor with top plate fixing fitted with a red polyurethane tyre white nylon centred wheel with roller bearings. Wheel diameter 150mm, tread width 40mm, overall height 190mm plate size 135mm x 110mm, hole centres 105mm x 80mm. Load capacity 350kg.



Diameter (mm)	150
Fixing Option	Plate
Castor Type	Fixed
Bearing Type	Roller
Height (mm)	190
Plate Size (mm)	135 x 110
Hole Centres (mm)	105 x 80
To Suit Fixing Bolt (mm)	12
Wheel Material	Polyurethane on Nylon
Colour / Shore Hardness	Red Polyurethane on Nylon Rim / 96 Shore A
Temperature Resistance	-20 °C TO +70 °C
Top Plate Thickness (mm)	5.5
Fork Thickness (mm)	5.5
Load Capacity (kg)	350
Tread (mm)	40

BIL GROUP LTD

Porte Marsh Road, Calne, Wiltshire, SN11 9BW

Registered in England No: 2603821

VAT Reg: GB572705729

