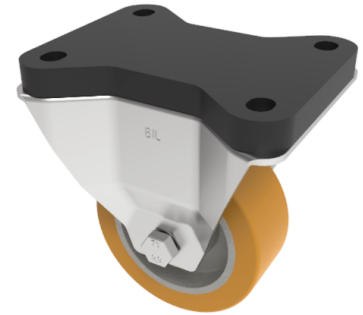


Polyurethane Fixed Plate Castor 100mm 250kg

Product code: BZEHF100PABJFP



Pressed steel fixed castor with a top plate fixing fitted with a polyurethane tyred wheel on aluminium centre with ball bearings. Wheel diameter 100mm, tread width 40mm, overall height 144mm, top plate 135mm x 105mm, hole centres 105mm x 80mm. Load capacity 250kg.

Fixing Option	Plate
Diameter (mm)	100
Load Capacity (kg)	250
Castor Type	Fixed
Height (mm)	144
Wheel Material	Polyurethane on Aluminium
Colour / Shore Hardness	Brown Polyurethane on Aluminium Rim / 93 Shore A
Bearing Type	Ball
Tread (mm)	40
Fork Thickness (mm)	3
Temperature Resistance	-20 °C TO +70 °C
Plate Size (mm)	135 x 105
Hole Centres (mm)	105 x 80
Top Plate Thickness (mm)	18
To Suit Fixing Bolt (mm)	10

BIL GROUP LTD

Porte Marsh Road, Calne, Wiltshire, SN11 9BW

Registered in England No: 2603821

VAT Reg: GB572705729

