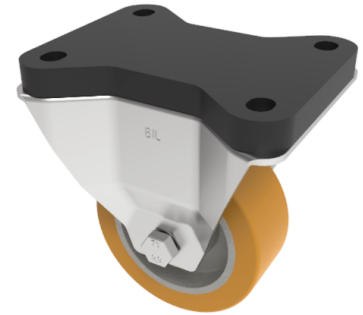


## Polyurethane Fixed Plate Castor 125mm 300kg

**Product code: BZEHF125PABJFP**



Pressed steel fixed castor with a flat plate fixing fitted with a brown polyurethane tyred on aluminium centred wheel with ball bearing. Wheel diameter 125mm, Tread width 40mm, overall height 170mm, top plate 135mm x 105mm, hole centres 105mm x 80mm Load capacity 300kg.

Fixing Option	Plate
Diameter (mm)	125
Load Capacity (kg)	300
Castor Type	Fixed
Height (mm)	170
Wheel Material	Polyurethane on Aluminium
Colour / Shore Hardness	Brown Polyurethane on Aluminium Rim / 93 Shore A
Bearing Type	Ball
Tread (mm)	40
Fork Thickness (mm)	3
Temperature Resistance	-20 °C TO +70 °C
Plate Size (mm)	135 x 105
Hole Centres (mm)	105 x 80
Top Plate Thickness (mm)	18
To Suit Fixing Bolt (mm)	10

### BIL GROUP LTD

Porte Marsh Road, Calne, Wiltshire, SN11 9BW

Registered in England No: 2603821

VAT Reg: GB572705729

