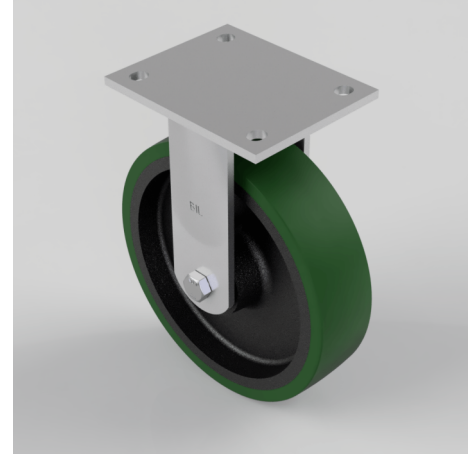


Polyurethane Green Plate Fixed Castor 200mm 600kg Load

Product code: BZJF200EPTB

Fabricated fixed castor with a top plate fixing fitted with a green polyurethane tyred cast iron centred wheel with roller bearings. Wheel diameter 200mm, tread width 50mm, overall height 240mm, top plate 135mm x 110mm, hole centres 105mm x 80mm. Load capacity 600kg.



Diameter (mm)	200
Fixing Option	Plate
Castor Type	Fixed
Bearing Type	Roller
Height (mm)	240
Plate Size (mm)	135 x 110
Hole Centres (mm)	105 x 80
To Suit Fixing Bolt (mm)	10
Wheel Material	Polyurethane on Cast Iron
Colour / Shore Hardness	Green Polyurethane on Cast Iron Rim / 94 Shore A
Temperature Resistance	-20 °C TO +80 °C
Top Plate Thickness (mm)	5.5
Fork Thickness (mm)	5.5
Load Capacity (kg)	600
Tread (mm)	50

BIL GROUP LTD

Porte Marsh Road, Calne, Wiltshire, SN11 9BW

Registered in England No: 2603821

VAT Reg: GB572705729

