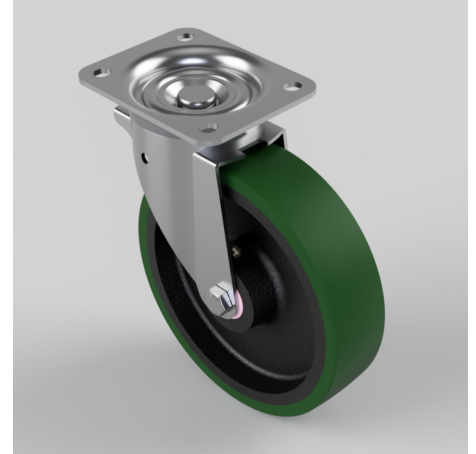


Polyurethane Green Plate Swivel Castor 200mm 350kg Load

Product code: BZWB200EPTB

Pressed steel swivel flat plate castor with a top plate fixing fitted with green polyurethane tyred tyre on cast iron centred wheel with roller bearings. Wheel diameter 200mm, tread width 50mm, overall height 238mm, plate size 135mm x 110mm, hole centres 105mm x 80/75mm, load capacity 350kg.



Diameter (mm)	200
Castor Type	Swivel
Fixing Option	Plate
Height (mm)	238
Wheel Material	Polyurethane on Cast Iron
Colour / Shore Hardness	Green Polyurethane on Cast Iron Rim / 94 Shore A
Temperature Resistance	-20 °C TO +80 °C
Bearing Type	Roller
Load Capacity (kg)	350
Tread (mm)	50
Swivel Radius (mm)	157
Plate Size (mm)	135 x 110
Hole Centres (mm)	105 x 80/75
Top Plate Thickness (mm)	4
Fork Thickness (mm)	3
To Suit Fixing Bolt (mm)	10

BIL GROUP LTD

Porte Marsh Road, Calne, Wiltshire, SN11 9BW

Registered in England No: 2603821

VAT Reg: GB572705729

