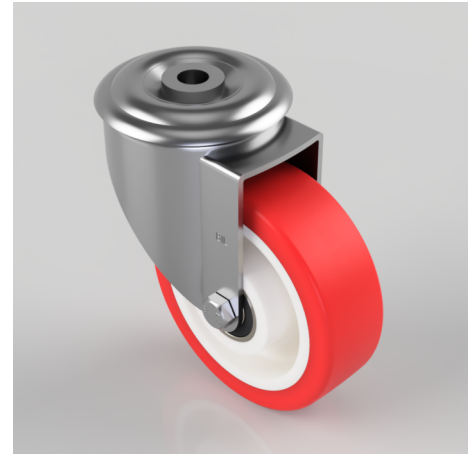


Polyurethane Nylon Bolt Hole Swivel Castor 100mm 180kg Load

Product code: BZMM100NPBJBH12

Pressed steel swivel with 12mm, fitted with a top plate, red polyurethane on white nylon cantered wheel, with double ball bearings, 100mm wheel diameter, 32mm tread width, 128mm overall height with a load capacity of 180kgs



Diameter (mm)	100
Castor Type	Swivel
Fixing Option	Bolt Hole
Height (mm)	128
Wheel Material	Polyurethane on Nylon
Colour / Shore Hardness	Red Polyurethane on Nylon Rim / 96 Shore A
Temperature Resistance	-20 °C TO +70 °C
Bearing Type	Ball
Load Capacity (kg)	180
Tread (mm)	32
Swivel Radius (mm)	88
Head Dia (mm)	76
Fork Thickness (mm)	2.5
To Suit Fixing Bolt (mm)	12

BIL GROUP LTD

Porte Marsh Road, Calne, Wiltshire, SN11 9BW

Registered in England No: 2603821

VAT Reg: GB572705729

