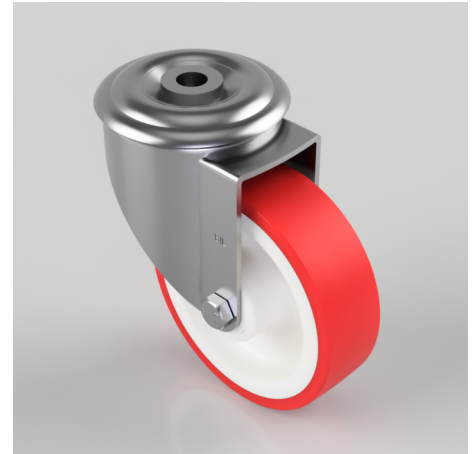


## Polyurethane Nylon Bolt Hole Swivel Castor 100mm 180kg Load

**Product code: BZMM100NPBBH12**

Pressed steel swivel castor with 12mm bolt hole fixing fitted with a red polyurethane white nylon centred wheel with roller bearing. Wheel diameter 100mm, tread width 30mm, overall height 128mm. Load capacity 180kg.



Diameter (mm)	100
Castor Type	Swivel
Fixing Option	Bolt Hole
Height (mm)	128
Wheel Material	Polyurethane on Nylon
Colour / Shore Hardness	Red Polyurethane on Nylon Rim / 96 Shore A
Temperature Resistance	-20 °C TO +70 °C
Bearing Type	Roller
Load Capacity (kg)	180
Tread (mm)	30
Swivel Radius (mm)	88
Head Dia (mm)	76
Fork Thickness (mm)	2.5
To Suit Fixing Bolt (mm)	12