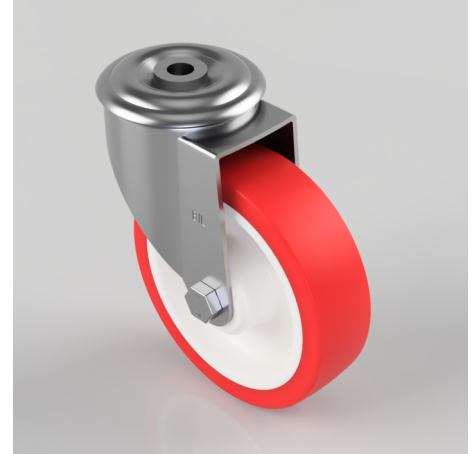


Polyurethane Nylon Bolt Hole Swivel Castor 125mm 200kg Load

Product code: BZMM125NPBH12

Pressed steel swivel castor with a 12mm bolt hole fixing fitted with a red polyurethane tyred on a white nylon centred wheel with a plain bore. Wheel diameter 125mm, tread width 35mm, overall height 155mm. Load capacity 200kg.



Diameter (mm)	125
Castor Type	Swivel
Fixing Option	Bolt Hole
Height (mm)	155
Wheel Material	Polyurethane on Nylon
Colour / Shore Hardness	Red Polyurethane on Nylon Rim / 96 Shore A
Temperature Resistance	-20 °C TO +70 °C
Bearing Type	Plain
Load Capacity (kg)	200
Tread (mm)	35
Swivel Radius (mm)	104
Head Dia (mm)	76
Fork Thickness (mm)	2
To Suit Fixing Bolt (mm)	12