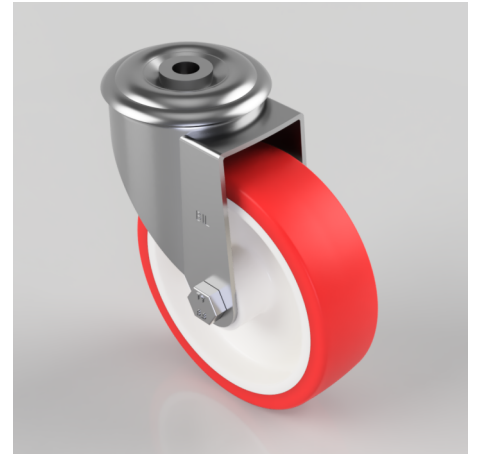


## Polyurethane Nylon Bolt Hole Swivel Castor 125mm 200kg Load

**Product code: BZMM125NPBBH12**

Pressed steel swivel castor with a 12mm bolt hole fitted with a red polyurethane on white nylon centered wheel with roller bearings, 125mm wheel diameter, 36mm tread width, 155mm overall height with a load capacity of 200kgs.



Diameter (mm)	125
Castor Type	Swivel
Fixing Option	Bolt Hole
Height (mm)	155
Wheel Material	Polyurethane on Nylon
Colour / Shore Hardness	Red Polyurethane on Nylon Rim / 96 Shore A
Temperature Resistance	-20 °C TO +70 °C
Bearing Type	Roller
Load Capacity (kg)	200
Tread (mm)	36
Swivel Radius (mm)	104
Head Dia (mm)	76
Fork Thickness (mm)	2.5
To Suit Fixing Bolt (mm)	12