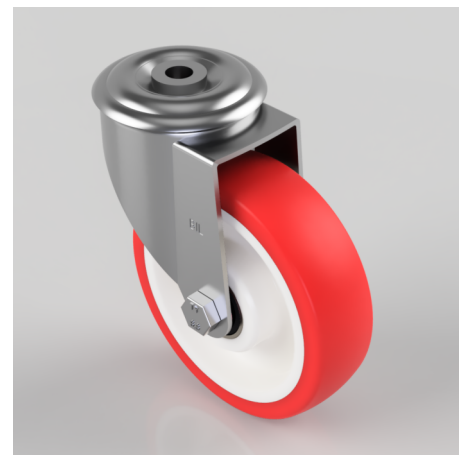


Polyurethane Nylon Bolt Hole Swivel Castor 125mm 200kg Load

Product code: BZMM125NPBJBH12

Pressed steel swivel with 12mm bolt hole fitted with a red polyurethane on white nylon centred wheel with double ball bearings, 125mm wheel diameter, 35mm tread width, 155mm overall height, with a load capacity of 200kgs.



Diameter (mm)	125
Castor Type	Swivel
Fixing Option	Bolt Hole
Height (mm)	155
Wheel Material	Polyurethane on Nylon
Colour / Shore Hardness	Red Polyurethane on Nylon Rim / 96 Shore A
Temperature Resistance	-20 °C TO +70 °C
Bearing Type	Ball
Load Capacity (kg)	200
Tread (mm)	35
Swivel Radius (mm)	104
Head Dia (mm)	76
Fork Thickness (mm)	2.5
To Suit Fixing Bolt (mm)	12

BIL GROUP LTD

Porte Marsh Road, Calne, Wiltshire, SN11 9BW

Registered in England No: 2603821

VAT Reg: GB572705729

