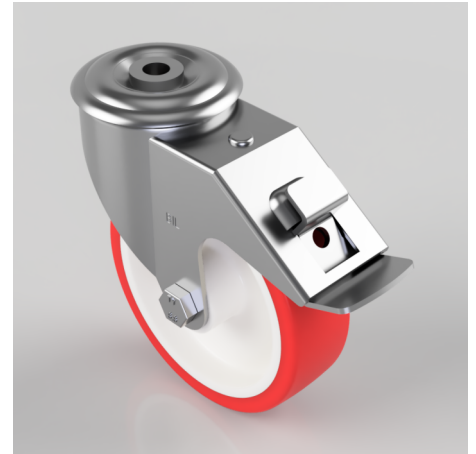


Polyurethane Nylon Bolt Hole Swivel Castor 125mm 200kg Load

Product code: BZMM125NPBBH12SW

Pressed steel swivel castor with a 12mm bolt hole fitted with a red polyurethane on white nylon centered wheel with roller bearings and total lock brake, 125mm wheel diameter, 35mm tread width, 155mm overall height with a load capacity of 200kgs. (Catalogue SKU BZMM125NPBBH12SWB)



Diameter (mm)	125
Castor Type	Swivel
Fixing Option	Bolt Hole
Height (mm)	155
Wheel Material	Polyurethane on Nylon
Colour / Shore Hardness	Red Polyurethane on Nylon Rim / 96 Shore A
Temperature Resistance	-20 °C TO +70 °C
Bearing Type	Roller
Load Capacity (kg)	200
Tread (mm)	36
Swivel Radius (mm)	134
Head Dia (mm)	76
Fork Thickness (mm)	2.5
To Suit Fixing Bolt (mm)	12

BIL GROUP LTD

Porte Marsh Road, Calne, Wiltshire, SN11 9BW

Registered in England No: 2603821

VAT Reg: GB572705729

