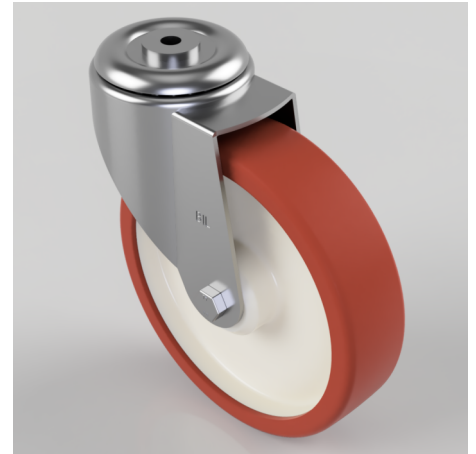


Polyurethane Nylon Bolt Hole Swivel Castor 200mm 350kg Load

Product code: BZMM200PNBBH12

Pressed steel with swivel castor with a 12mm bolt hole fitted with a brown polyurethane tyred white nylon centred wheel with a roller bearing. Wheel diameter 200mm, tread width 50mm, overall height 235mm, bolt hole 12mm. Load capacity 350kg.



| | |
|--------------------------|--|
| Diameter (mm) | 200 |
| Castor Type | Swivel |
| Fixing Option | Bolt Hole |
| Height (mm) | 235 |
| Wheel Material | Polyurethane on Nylon |
| Colour / Shore Hardness | Brown Polyurethane on Nylon Rim / 96 Shore A |
| Temperature Resistance | -20 °C TO +60 °C |
| Bearing Type | Roller |
| Load Capacity (kg) | 350 |
| Tread (mm) | 50 |
| Swivel Radius (mm) | 168 |
| Head Dia (mm) | 90 |
| Fork Thickness (mm) | 3 |
| To Suit Fixing Bolt (mm) | 12 |

BIL GROUP LTD

Porte Marsh Road, Calne, Wiltshire, SN11 9BW

Registered in England No: 2603821

VAT Reg: GB572705729

