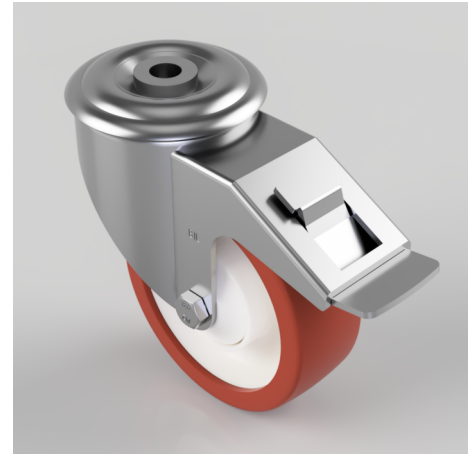


## Polyurethane Nylon Bolt Hole Swivel Castor Brake 100mm 170kg Load

**Product code: BZMM100PNBJBH12SWB**

Pressed steel swivel castor with a 12mm bolt hole fixing fitted with a brown polyurethane white nylon centred wheel with a single ball bearing with retaining caps and total lock brake. Wheel diameter 100mm, tread width 35mm, overall height 128mm, load capacity 170kg.



Diameter (mm)	100
Castor Type	Swivel with Total Lock Brake
Fixing Option	Bolt Hole
Height (mm)	128
Wheel Material	Polyurethane on Nylon
Colour / Shore Hardness	Brown Polyurethane on Nylon Rim / 96 Shore A
Temperature Resistance	-20 °C TO +60 °C
Bearing Type	Ball
Load Capacity (kg)	170
Tread (mm)	35
Swivel Radius (mm)	119
Head Dia (mm)	76
Fork Thickness (mm)	2.5
To Suit Fixing Bolt (mm)	12

## BIL GROUP LTD

Porte Marsh Road, Calne, Wiltshire, SN11 9BW

Registered in England No: 2603821

VAT Reg: GB572705729

