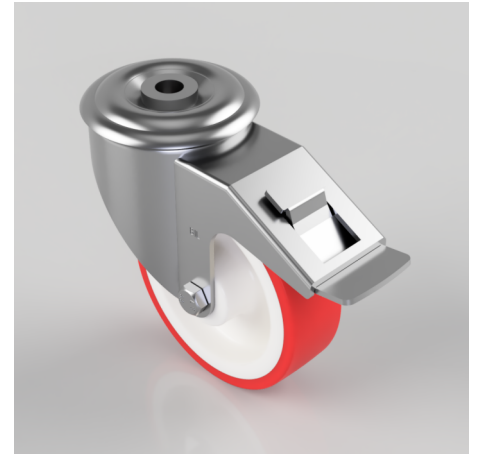


## Polyurethane Nylon Bolt Hole Swivel Castor Brake 100mm 180kg Load

**Product code: BZMM100NPBH12SWB**

Pressed steel swivel castor with bolt hole fixing fitted with a polyurethane tyre nylon centred wheel with plain bore and swivel wheel brake. Wheel diameter 100mm, tread width 30mm, overall height 128mm, 12mm bolt hole. Load capacity 180kg.



Diameter (mm)	100
Castor Type	Swivel with Total Lock Brake
Fixing Option	Bolt Hole
Height (mm)	128
Wheel Material	Polyurethane on Nylon
Colour / Shore Hardness	Red Polyurethane on Nylon Rim / 96 Shore A
Temperature Resistance	-20 °C TO +70 °C
Bearing Type	Plain
Load Capacity (kg)	180
Tread (mm)	30
Swivel Radius (mm)	119
Head Dia (mm)	76
Fork Thickness (mm)	2
To Suit Fixing Bolt (mm)	12