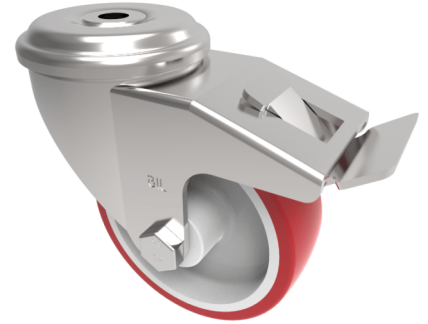


## Polyurethane Nylon Bolt Hole Swivel Castor Brake 100mm 250kg Load

**Product code: BZEH100NPBH12SWB**

Pressed steel swivel castor with a 12mm bolt hole fixing fitted with a red polyurethane on white nylon centred wheel with a plain bore and total lock brake. Wheel diameter 100mm, tread width 33mm, overall height 128mm. Load capacity 250kg.



Diameter (mm)	100
Castor Type	Swivel with Total Lock Brake
Fixing Option	Bolt Hole
Height (mm)	128
Wheel Material	Polyurethane on Nylon
Colour / Shore Hardness	Red Polyurethane on Nylon Rim / 96 Shore A
Temperature Resistance	-20 °C TO +70 °C
Bearing Type	Plain
Load Capacity (kg)	250
Tread (mm)	33
Swivel Radius (mm)	116
Head Dia (mm)	76
Fork Thickness (mm)	3
To Suit Fixing Bolt (mm)	12

### BIL GROUP LTD

Porte Marsh Road, Calne, Wiltshire, SN11 9BW

Registered in England No: 2603821

VAT Reg: GB572705729

