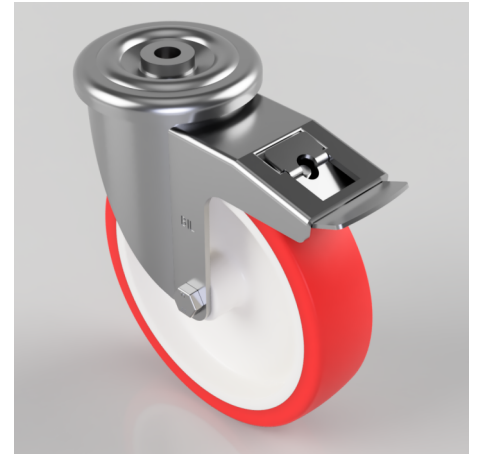


Polyurethane Nylon Bolt Hole Swivel Castor Brake 200mm 500kg Load

Product code: BZMM200NPBH16SWB

Pressed steel swivel castor with a bolt hole fixing fitted with a red polyurethane tyre white nylon centred wheel with a Plain Bore and total lock brake. Wheel diameter 200mm, tread width 48mm, overall height 238mm, bolt hole 16mm. Load capacity 500kg.



Diameter (mm)	200
Castor Type	Swivel with Total Lock Brake
Fixing Option	Bolt Hole
Height (mm)	238
Wheel Material	Polyurethane on Nylon
Colour / Shore Hardness	Red Polyurethane on Nylon Rim / 96 Shore A
Temperature Resistance	-20 °C TO +70 °C
Bearing Type	Plain
Load Capacity (kg)	500
Tread (mm)	48
Swivel Radius (mm)	167
Head Dia (mm)	114
Fork Thickness (mm)	4
To Suit Fixing Bolt (mm)	16