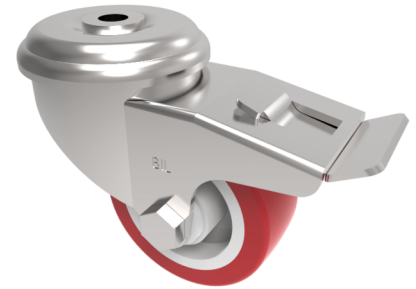


Polyurethane Nylon Bolt Hole Swivel Castor Brake 80mm 210kg Load

Product code: SSEH80NPBH12SWB



Grade 304 Pressed stainless steel swivel castor with a 12mm bolt hole fitted with a red polyurethane tyred white nylon centred wheel with a plain bore and a total lock brake. Wheel diameter 80mm, tread width 33mm, overall height 111mm, Load capacity 210kg

Diameter (mm)	80
Fixing Option	Bolt Hole
Castor Type	Swivel with Total Lock Brake
Height (mm)	110
Wheel Material	Polyurethane on Nylon
Colour / Shore Hardness	Red Polyurethane on Nylon Rim / 96 Shore A
Bearing Type	Plain
Tread (mm)	33
Fork Thickness (mm)	3
To Suit Fixing Bolt (mm)	12
Load Capacity (kg)	210
Temperature Resistance	-20 °C TO +70 °C
Head Dia (mm)	78
Swivel Radius (mm)	116

BIL GROUP LTD

Porte Marsh Road, Calne, Wiltshire, SN11 9BW

Registered in England No: 2603821

VAT Reg: GB572705729

