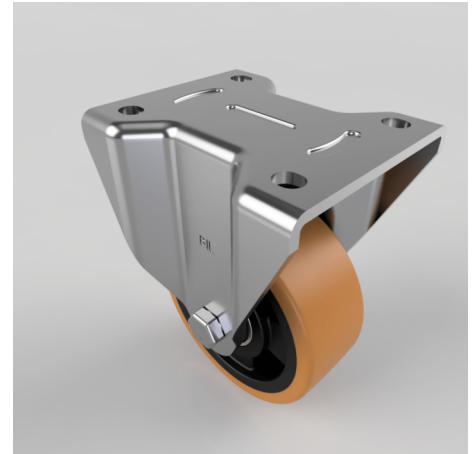


## Polyurethane Nylon Plate Fixed Castor 100mm 300kg Load

**Product code: BZXPF100XPNB**

Pressed steel fixed castor with a top plate fixing fitted with a brown polyurethane tyre on black nylon centred wheel with ball bearings. Wheel diameter 100mm, tread width 40mm, overall height 140mm, top plate 105mm x 86mm, hole centres 80mm x 60mm. Load capacity 300kg



Diameter (mm)	100
Castor Type	Fixed
Fixing Option	Plate
Height (mm)	140
Wheel Material	Polyurethane on Nylon
Colour / Shore Hardness	Brown Polyurethane on Nylon Rim / 96 Shore A
Temperature Resistance	-20 °C TO +60 °C
Bearing Type	Ball
Load Capacity (kg)	300
Tread (mm)	40
Plate Size (mm)	105 x 86
Hole Centres (mm)	80 / 77 X 60
Top Plate Thickness (mm)	6
Fork Thickness (mm)	5
To Suit Fixing Bolt (mm)	10