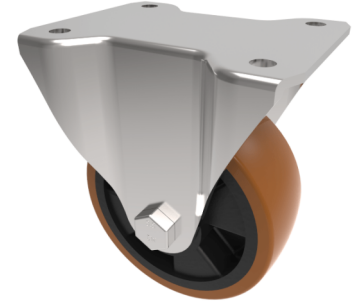


## Polyurethane Nylon Plate Fixed Castor 100mm 300kg Load

**Product code: BZHF100XPNB**



Pressed steel fixed castor with a top plate fixing fitted with a brown polyurethane tyre on black nylon centred wheel with a roller bearing. Wheel diameter 100mm, tread width 40mm, overall height 128mm, top plate 105mm x 86mm, hole centres 80mm x 60mm. Load capacity 300kg

|                          |  |
|--------------------------|--|
| Diameter (mm)            | 100  |
| Castor Type              | Fixed  |
| Fixing Option            | Plate  |
| Height (mm)              | 128  |
| Wheel Material           | Polyurethane on Nylon                        |
| Colour / Shore Hardness  | Brown Polyurethane on Nylon Rim / 96 Shore A |
| Temperature Resistance   | -20 °C TO +60 °C                             |
| Bearing Type             | Roller                                       |
| Load Capacity (kg)       | 300  |
| Tread (mm)               | 40   |
| Plate Size (mm)          | 105 x 86                                     |
| Hole Centres (mm)        | 80 X 60                                      |
| Top Plate Thickness (mm) | 4  |
| Fork Thickness (mm)      | 4  |
| To Suit Fixing Bolt (mm) | 8  |