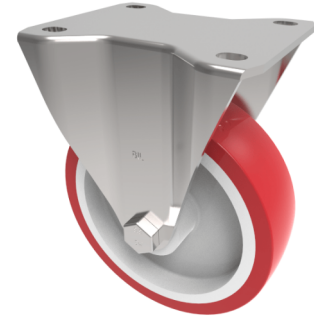


## Polyurethane Nylon Plate Fixed Castor 125mm 300kg Load

**Product code: BZEHF125NPB**

Pressed steel fixed castor with a top plate fixing fitted with a red polyurethane tyred on a white nylon centred wheel with a roller bearing. Wheel diameter 125mm, tread width 34mm, overall height 155mm, top plate 105mm x 88mm, hole centres 80mm x 60mm. Load capacity 300kg.



Diameter (mm)	125
Castor Type	Fixed
Fixing Option	Plate
Height (mm)	155
Wheel Material	Polyurethane on Nylon
Colour / Shore Hardness	Red Polyurethane on Nylon Rim / 96 Shore A
Temperature Resistance	-20 °C TO +70 °C
Bearing Type	Roller
Load Capacity (kg)	300
Tread (mm)	34
Plate Size (mm)	105 x 86
Hole Centres (mm)	80 X 60
Top Plate Thickness (mm)	3
Fork Thickness (mm)	3
To Suit Fixing Bolt (mm)	8

### BIL GROUP LTD

Porte Marsh Road, Calne, Wiltshire, SN11 9BW

Registered in England No: 2603821

VAT Reg: GB572705729

