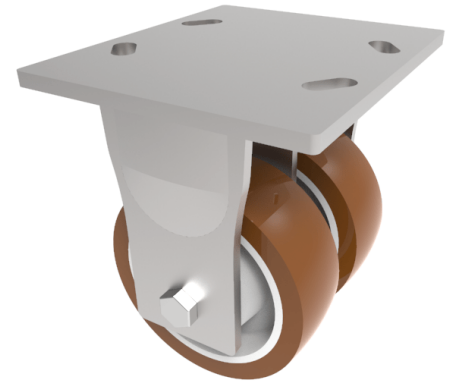


## Polyurethane Nylon Plate Fixed Castor 150mm 1200kg Load

**Product code: 2BZKF150PN**

Twin-wheeled fabricated fixed castor with a top plate fixing fitted with 2 x brown polyurethane tyred nylon centred plain bore wheels. Wheel diameter 150mm, tread width 45mm, overall height 200mm, top plate 150mm x 110mm, hole centers 105mm x 80mm or 121mm x 59mm. Load capacity 1200kg.



Diameter (mm)	150
Fixing Option	Plate
Castor Type	Fixed
Bearing Type	Plain
Plate Size (mm)	175 x 150
Hole Centres (mm)	105/121 x 80/59
Height (mm)	200
To Suit Fixing Bolt (mm)	12
Wheel Material	Polyurethane on Nylon
Colour / Shore Hardness	Brown Polyurethane on Nylon Rim / 96 Shore A
Temperature Resistance	&quot;-20 °C TO +60 °C
Tread (mm)	2 x 45
Load Capacity (kg)	1500
Top Plate Thickness (mm)	7.5
Fork Thickness (mm)	6

### BIL GROUP LTD

Porte Marsh Road, Calne, Wiltshire, SN11 9BW

Registered in England No: 2603821

VAT Reg: GB572705729

