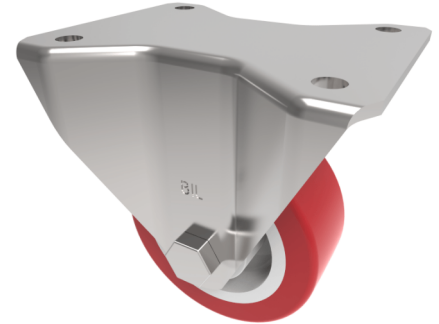


## Polyurethane Nylon Plate Fixed Castor 80mm 210kg Load

**Product code: BZHF80NPBJ**

Pressed steel fixed castor with a top plate fixing fitted with a red polyurethane tyre on white nylon centred wheel with a ball bearing. Wheel diameter 80mm, tread width 33mm, overall height 110mm, top plate 105mm x 86mm, hole centres 80mm x 60mm. Load capacity 210kg.



Diameter (mm)	80
Castor Type	Fixed
Fixing Option	Plate
Height (mm)	110
Wheel Material	Polyurethane on Nylon
Colour / Shore Hardness	Red Polyurethane on Nylon Rim / 96 Shore A
Temperature Resistance	-20 °C TO +70 °C
Bearing Type	Ball
Load Capacity (kg)	210
Tread (mm)	33
Plate Size (mm)	105 x 86
Hole Centres (mm)	80 X 60
Top Plate Thickness (mm)	4
Fork Thickness (mm)	4
To Suit Fixing Bolt (mm)	8