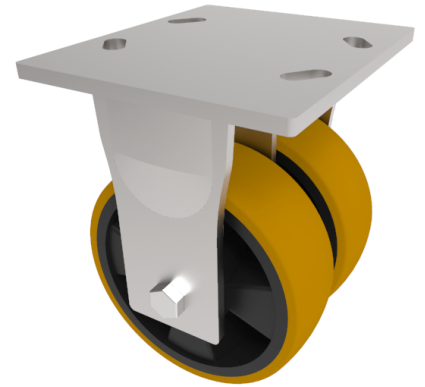


Polyurethane Nylon Plate Fixed Castor 125mm 800kg Load

Product code: 2BZKF125XPNB



Twin wheeled fabricated fixed castor with a top plate fixing fitted with 2 x polyurethane on black nylon centre wheels with ball bearings. Wheel diameter 2 x 125mm, tread width 2 x 45mm, overall height 175mm, top plate 150mm x 110mm, hole centres 105mm x 80mm or 121mm x 59mm. Load capacity 800kg.

Diameter (mm)	125
Fixing Option	Plate
Castor Type	Fixed
Bearing Type	Ball
Plate Size (mm)	175 x 150
Hole Centres (mm)	105/121 x 80/59
Height (mm)	177
To Suit Fixing Bolt (mm)	12
Wheel Material	Polyurethane on Nylon
Colour / Shore Hardness	Brown Polyurethane on Nylon Rim / 96 Shore A
Temperature Resistance	"-20 °C TO +80 °C
Tread (mm)	2 x 45
Load Capacity (kg)	800
Top Plate Thickness (mm)	7.5
Fork Thickness (mm)	6

BIL GROUP LTD

Porte Marsh Road, Calne, Wiltshire, SN11 9BW

Registered in England No: 2603821

VAT Reg: GB572705729

