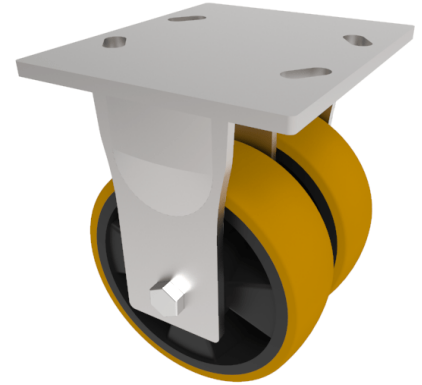


Polyurethane Nylon Plate Fixed Castor 150mm 1500kg Load

Product code: 2BZKF200XPNB

Twin-wheeled fabricated fixed castor with a top plate fixing and 4 way directional lock fitted with 2 x brown polyurethane tyred black nylon centred ball bearing wheels. Wheel diameter 200mm, tread width 57mm, overall height 200mm, top plate 150mm x 110mm, hole centers 105mm x 80mm or 121mm x 59mm. Load capacity 1500kg.



Diameter (mm)	200
Fixing Option	Plate
Castor Type	Fixed
Bearing Type	Ball
Plate Size (mm)	175 x 150
Hole Centres (mm)	105/121 x 80/59
Height (mm)	250
To Suit Fixing Bolt (mm)	12
Wheel Material	Polyurethane on Nylon
Colour / Shore Hardness	Brown Polyurethane on Nylon Rim / 96 Shore A
Temperature Resistance	"-20 °C TO +80 °C
Tread (mm)	2 x 57
Load Capacity (kg)	1500
Top Plate Thickness (mm)	7.5
Fork Thickness (mm)	6

BIL GROUP LTD

Porte Marsh Road, Calne, Wiltshire, SN11 9BW

Registered in England No: 2603821

VAT Reg: GB572705729

