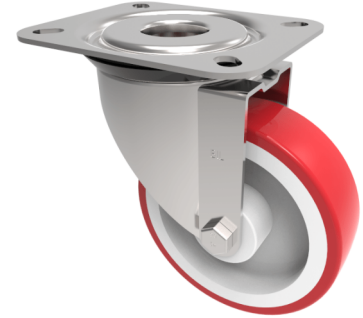


Polyurethane Nylon Plate Swivel Castor 100mm 180kg Load

Product code: BZRMM100NPB



Pressed steel swivel castor top plate fixing fitted with a red polyurethane tyre white nylon centred wheel with a roller bearing. Wheel diameter 100mm, tread width 30mm, overall height 128mm, top plate 104mm x 80mm and 72mm x 52mm hole centres 80mm x 60mm and 72mm x 52mm. Load capacity 180kg.

Diameter (mm)	100
Castor Type	Swivel
Fixing Option	Plate
Height (mm)	128
Wheel Material	Polyurethane on Nylon
Colour / Shore Hardness	Red Polyurethane on Nylon Rim / 96 Shore A
Temperature Resistance	-20 °C TO +70 °C
Bearing Type	Roller
Load Capacity (kg)	180
Tread (mm)	30
Swivel Radius (mm)	84
Plate Size (mm)	104 x 80
Hole Centres (mm)	80/72 x 60/52
Top Plate Thickness (mm)	2.5
Fork Thickness (mm)	2.5
To Suit Fixing Bolt (mm)	8

BIL GROUP LTD

Porte Marsh Road, Calne, Wiltshire, SN11 9BW

Registered in England No: 2603821

VAT Reg: GB572705729

