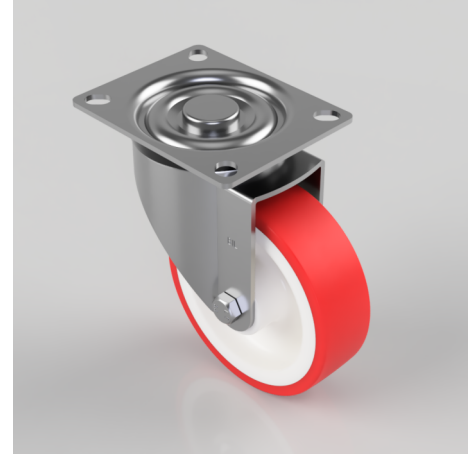


## Polyurethane Nylon Plate Swivel Castor 100mm 180kg Load

**Product code: BZGMM100NPB**

Pressed steel swivel castor with a top plate fixing fitted with a red polyurethane tyre on white nylon centre with a roller bearing. Wheel diameter 100mm, tread width 30mm, overall height 128mm, top plate 98mm x 78mm, hole centres 82/78mm x 62/58mm. Load capacity 180kg.



Diameter (mm)	100
Castor Type	Swivel
Fixing Option	Plate
Height (mm)	128
Wheel Material	Polyurethane on Nylon
Colour / Shore Hardness	Red Polyurethane on Nylon Rim / 96 Shore A
Temperature Resistance	-20 °C TO +70 °C
Bearing Type	Roller
Load Capacity (kg)	180
Tread (mm)	30
Swivel Radius (mm)	84
Plate Size (mm)	98 X 78
Hole Centres (mm)	82/78 X 62/58
Top Plate Thickness (mm)	2.5
Fork Thickness (mm)	2.5
To Suit Fixing Bolt (mm)	8

### BIL GROUP LTD

Porte Marsh Road, Calne, Wiltshire, SN11 9BW

Registered in England No: 2603821

VAT Reg: GB572705729

