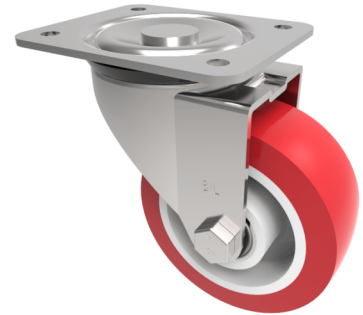


Polyurethane Nylon Plate Swivel Castor 100mm 250kg Load

Product code: BZEH100NPBJLP



Pressed steel swivel castor with a top plate fitted with a red polyurethane tyre on white nylon centred wheel with ball bearings, wheel diameter 100mm, tread width 40mm, overall height 128mm, top plate 105mm x 80mm, hole centres 105mm x 80mm or 116mm x 93.5mm with a load capacity of 250kgs.

Diameter (mm)	100
Castor Type	Swivel
Fixing Option	Plate
Height (mm)	128
Wheel Material	Polyurethane on Nylon
Colour / Shore Hardness	Red Polyurethane on Nylon Rim / 96 Shore A
Temperature Resistance	-20 °C TO +70 °C
Bearing Type	Ball
Load Capacity (kg)	250
Tread (mm)	40
Swivel Radius (mm)	90
Plate Size (mm)	135 x 110
Hole Centres (mm)	105/116 x 80/64
Top Plate Thickness (mm)	3
Fork Thickness (mm)	3
To Suit Fixing Bolt (mm)	10