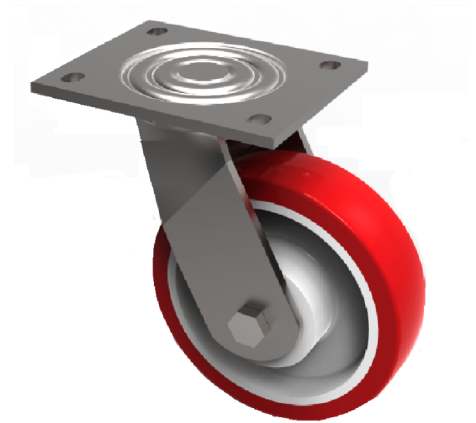


Polyurethane Nylon Plate Swivel Castor 100mm 250kg Load

Product code: BZJ100NPBJ

Fabricated swivel castor with a top plate fixing fitted with a red polyurethane tyre white nylon centred wheel with ball bearings. Wheel diameter 100mm, tread width 40mm, overall height 143mm, top plate 135mm x 110mm, hole centres 105mm x 80mm. Load capacity 250kg.



| | |
|--------------------------|--|
| Diameter (mm) | 100 |
| Fixing Option | Plate |
| Castor Type | Swivel |
| Bearing Type | Ball |
| Height (mm) | 143 |
| Plate Size (mm) | 135 x 110 |
| Hole Centres (mm) | 105 x 80 |
| To Suit Fixing Bolt (mm) | 10 |
| Wheel Material | Polyurethane on Nylon |
| Colour / Shore Hardness | Red Polyurethane on Nylon Rim / 96 Shore A |
| Temperature Resistance | -20 °C TO +70 °C |
| Top Plate Thickness (mm) | 5.5 |
| Fork Thickness (mm) | 5.5 |
| Swivel Radius (mm) | 90 |
| Load Capacity (kg) | 250 |
| Tread (mm) | 40 |