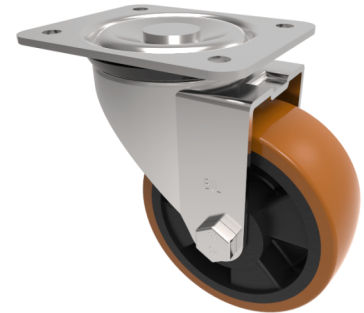


## Polyurethane Nylon Plate Swivel Castor 100mm 300kg Load

**Product code: BZEH100XPNBLP**



Pressed steel swivel castor with a top plate fixing fitted with a brown polyurethane tyre on black nylon centred wheel with a roller bearing. Wheel diameter 100mm, tread width 40mm, overall height 128mm, plate size 135mm x 110mm, hole centres 105mm x 80mm or 116mm x 93.5mm. Load capacity 300kg

Diameter (mm)	100
Castor Type	Swivel
Fixing Option	Plate
Height (mm)	128
Wheel Material	Polyurethane on Nylon
Colour / Shore Hardness	Brown Polyurethane on Nylon Rim / 96 Shore A
Temperature Resistance	-20 °C TO +60 °C
Bearing Type	Roller
Load Capacity (kg)	300
Tread (mm)	40
Swivel Radius (mm)	90
Plate Size (mm)	135 x 110
Hole Centres (mm)	105/116 x 80/64
Top Plate Thickness (mm)	3
Fork Thickness (mm)	3
To Suit Fixing Bolt (mm)	10